

**Nkosilathi Nyoni**  
074 826 0019  
nkosilathi@framework.co.za



**Framework Letting**  
0714900510

letting.framework.property@gmail.com

Contact Framework Property Services

011 481 7444

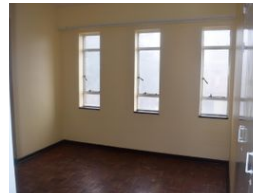
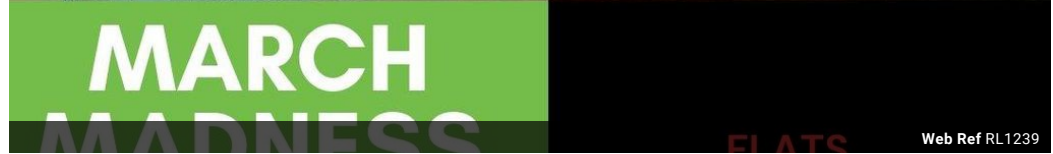
Framework House  
4 Boundary Road  
Rouxville  
2192

TENANT QUIRIES: MAINTENANCE  
072 728 2165 (Whatsapp)

EMERGENCY HOLIDAY CONTACTS:  
MAINTENANCE  
(Residential Tenants Only)

Marc: 072 420 8496  
Garth: 084 773 0766

PLEASE NOTE: The use of any Emergency Contractors are at your Own Risk and may be for your own account.



R4,300 pm

Lease Period 12 months    Availability Immediately    Deposit -  
Annual Escalation -



FLAT SPECIAL: FIRST MONTH RENT FREE! (T's and C's Apply)

FLAT SPECIAL: FIRST MONTH RENT FREE! (T's and C's Apply)

Spacious 1-bedroom flat to rent in Berea at Montana Court, CNR Joel & Fife Street. This lovely 1-bedroom flat features 1 bathroom, a lounge, and a kitchen. Wifi is available for R140 p/m. The flat is conveniently located, close to surrounding shops and transport routes. Please note that the advertised rental does not include monthly services. Don't miss out on this charming 1-bedroom flat to rent in Berea, Johannesburg. Contact FRAMEWORK for your viewing today!

Deposit: R4,300 + R450 Water Deposit  
Admin Fee (once-off): R100 (Lease Fee R700 + R300 TPN Fee)  
Electricity: Prepaid  
Water: R110 per adult and R40 per child

Average Monthly Services: R492.54  
Basic Facility: R20  
Sewer: R389.06  
Refuse: R83.48

T's & C's apply

### Features

Interior	Exterior	
Bedrooms	1	Pool
Bathrooms	1	No
Kitchens	1	
Recep. Rooms	1	
Furnished	No	

